

RFTR232: conversion kit for rearsets FTRKA006/W/R (from std to reverse shifting)

Introduction

Thank you for purchasing a LighTech product.

Please read carefully the instructions contained in this manual and make sure to work safely before start mounting the equipment.

- For the assembly of the components LighTech recommends to refer to skilled personnel. LighTech is not liable for operations carried out without proper training or knowledge, which could lead to risky situations for You and other people.
- It is recommended to work in an environment with good illumination conditions and proper spaces.
- To ensure the safety of the working area keep away children and animals.
- Make sure to use proper tools and equipment, in good shape.
- LighTech is not liable for damaged products and/or property damages and personal injuries due to an improper assembly.

General information

- Make sure that the motorcycle is in a stable and safe position.
- Make sure that it has no hot mechanical components (especially engine, exhaust pipe, brakes). Otherwise, wait until they cool down before proceeding.
- Use suitable clothing and do not wear rings, necklaces, large garments and hair down which could be dangerous.
- The product is designed and tested to be used with the motorcycle in original conditions, not with reference to not original components from third parties.
- This information material can be downloaded from the Website www.lightech.it - email: info@lightech.it

Assembly

- Before proceeding, please examine the drawing supplied in the packaging.
- The information material includes an exploded view drawing with the codes required for spare part order.
- Where not expressly specified, use standard tightening torques (UNI/ISO) suitable for the screw size.
- Any motorcycle is subject to vibrations, therefore it is necessary to use anti-vibration threadlocker (weak) to avoid the loosening of the screws and their possible loss.
- Before using the vehicle, check carefully the job done and the correct functionality of the installed components.

Usage and maintenance

- For the use on the road LighTech recommends a comprehensive periodic check of the rearsets.
- For a racing use LighTech recommends a comprehensive check before each use.
- The rearsets have been designed and tested as a whole. Changes to components and/or the use of third-party components on the rearsets could cause hazards for which LighTech is not liable.
- Before using the product, verify the absence of crackings, deformations, scratches, wear, corrosion. In case of dissimilarities, before using the motorcycle restore the original state of the rearsets by changing the required parts.
- ATTENTION: An exceptional event such as a fall could cause irreversible damages to the rearsets. Before reusing the motorcycle, check the proper functionality and integrity of the rearsets. In case of damages, restore the original state of the rearsets by changing the required parts in order to avoid potentially dangerous situations.
- The use of the vehicle in extreme environmental conditions (coastal areas, extreme temperatures, chemicals, uneven stretch of road) could damage the components of the rearsets and requires a more frequent maintenance based on the actual wear.
- Cleaning the rearsets with aggressive agents or high pressure cleaning hoses could damage the bearings and other parts of the rearsets.
- The purchase of rearsets without knowing their history requires a careful check of the components.
- As a safety guarantee, LighTech recommends to purchase from official and professional sales channels.

ATTENTION:

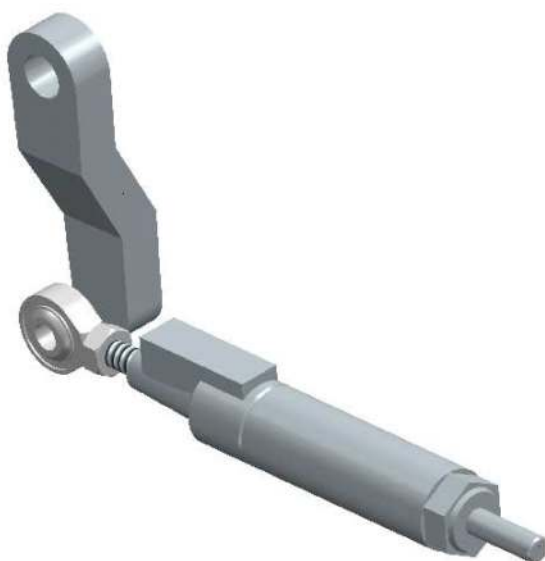
The pictures used in this document could differ in some components and/or colours from the product that you have purchased, therefore they should be considered just as an indication and an example and not a contractual element.

Functionality and installation of the kit RFTR232.

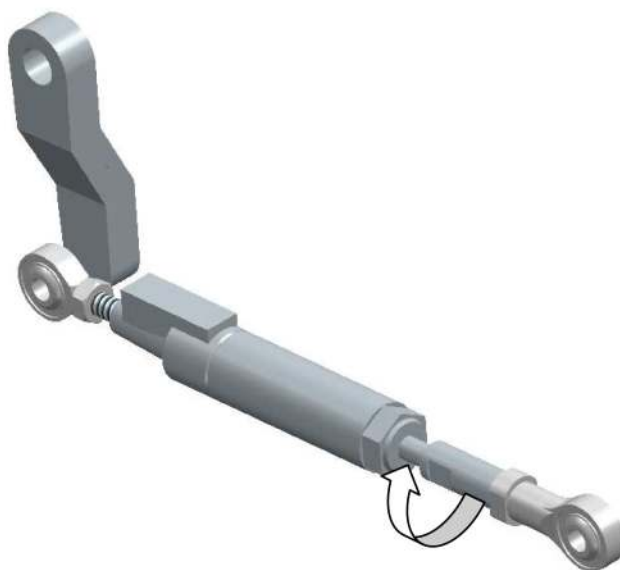
This kit allows You to convert the LighTech FTRKA006 rearsets for the use of the standard shifting in reverse mode.

To install the reverse shifting kit do as follows:

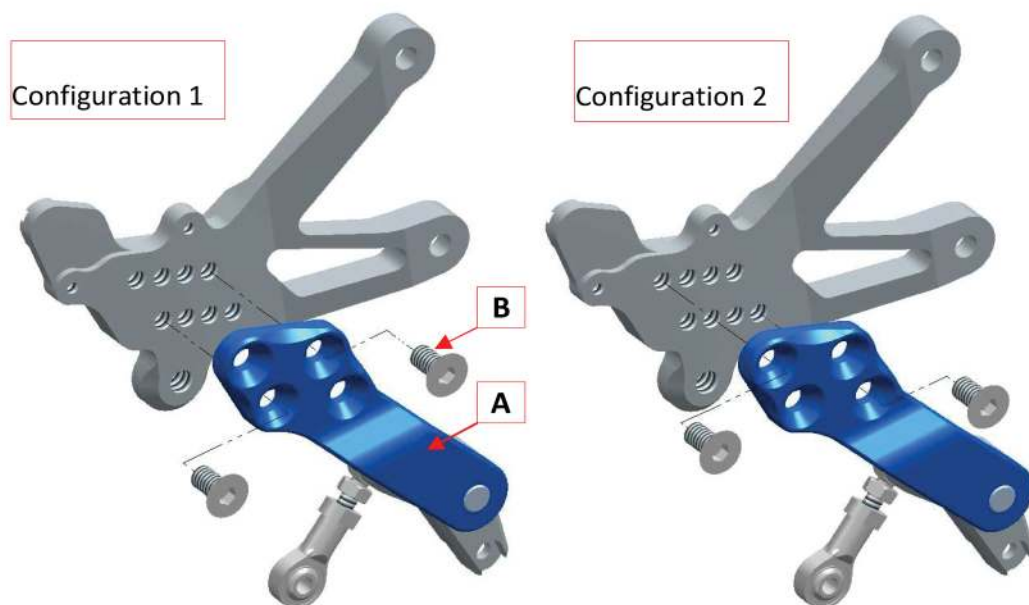
- If the LighTech rearsets are already mounted on the motorcycle, remove them in order to reach the rear side of the support plate.
- Separate the rearsets lever from the load cell (leaving the load cell mounted on the motorcycle).



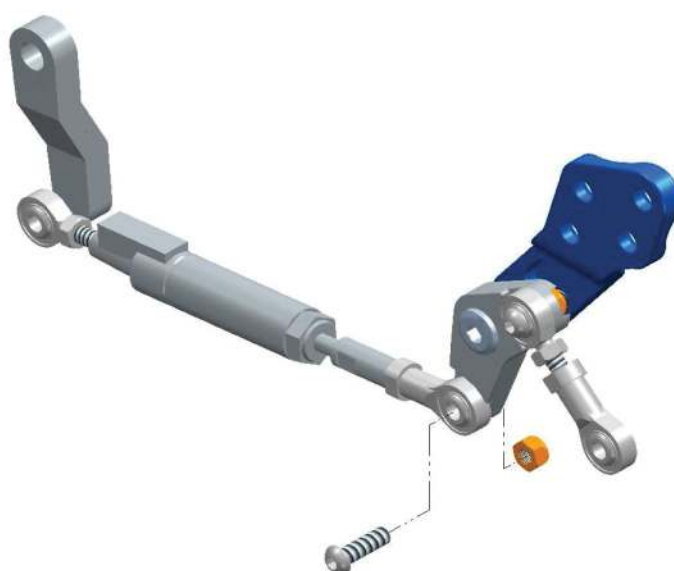
- Install the uniball with its extension on the load cell.



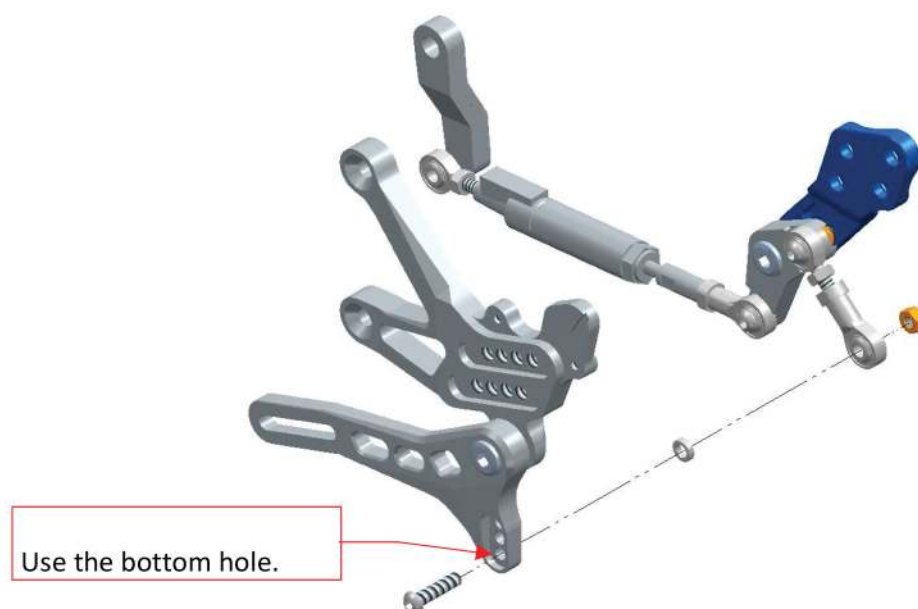
- Fix the plate [A] through the screws [B] using the free holes, as specified in the configuration 1 or 2. Tighten the screws with torque 12 Nm using anti-vibration threadlocker.



- Fix the uniball to the KIT plate.



- Fix the lever to the KIT.



- Mount the rearsets on the motorcycle again by tightening the two screws [C] which fix them to the chassis with torque 12 Nm using anti-vibration threadlocker.

